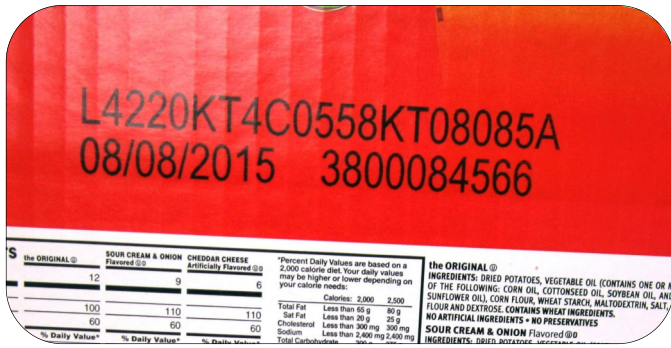


PRINT SOLUTIONS FOR PACKAGING



m
managed print
by inc.jet

lifetime warranty

incjet
PROBLEM SOLVED

THERMAL INKJET CODING SOLUTIONS

TIJ (Thermal InkJet) is rapidly becoming one of the most powerful print technologies in the Packaging market. It is incredibly versatile, with the proven ability to print on a wide range of materials—from paper to plastics, glass to metals.

DESIGNED FOR PACKAGING

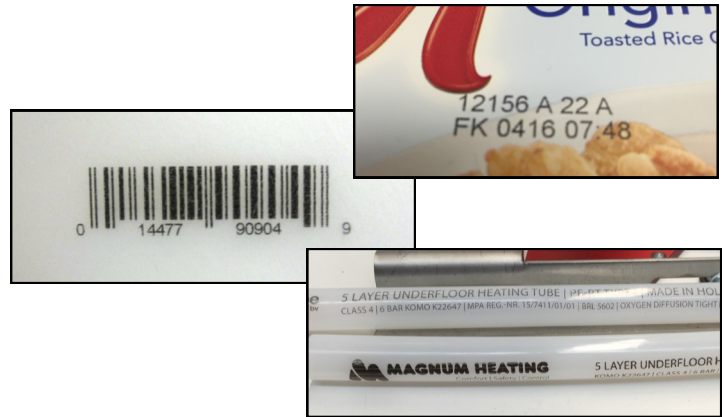
With their industrial strength build and high-performance components, inc.jet's packaging printers fit into virtually any manufacturing/packaging environment. And with an extensive range of inks available, there is practically no material that cannot be printed on clearly, quickly and efficiently.

inc.jet's designs allow for the maximum flexibility allowing you to fit the equipment around your needs, not the other way around.



EASY INTEGRATION

It is effortless to install inc.jet's printers into existing packaging lines and equipment. With industry standard mounting configurations and a design that takes up less room, inc.jet's packaging products are a smarter alternative. The free, yet incredibly powerful, enterprise level software, also allows you to integrate your data as simply.



A REAL LIFETIME WARRANTY

A guarantee of reliability is what your business needs today, and a company to stand behind its words.



inc.jet does just this by offering a genuine Lifetime Warranty on all of its hardware – the only coding company in the world that does this. If there is ever a problem, we will replace it free of charges for the Lifetime of that product—whether one year or twenty years from now.

HIGH PERFORMANCE

| | |
|-------------------------|-----------------------------|
| Throughput | 75 m/min. (at 600 x 600dpi) |
| | 150 m/min. (at 300x 300dpi) |
| Print Densities | User Configurable |
| Static Barcodes | 87 types (installed) |
| Dynamic Barcodes | 9 types (installed) |
| | Lot Codes |
| Printable Items | Shift Codes |
| | Bitmaps/Logos |
| | Date/Expiry Date |
| | Fixed Text |
| | Foreign Languages |
| | Counters and Batch Numbers |
| | User Inserts |

SMALL CHARACTER CODING

The 1/2" .UNO packaging printer's all-in-one print head and screen give you a simple, yet incredibly powerful way to print up to 1/2" of print with the minimum of effort and cost .

Using inc.jet's proven and highly reliable print solutions, (over 40,000 installed) the .UNO packaging printer is the perfect solution for serialization, barcodes and human-readable printing in all packaging applications. It is an ideal replacement option for costly, complex and troublesome CIJ printers.



PERFECT CODING SOLUTIONS

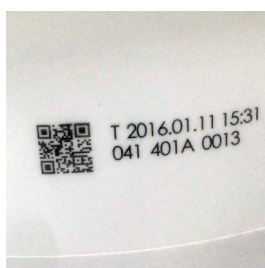
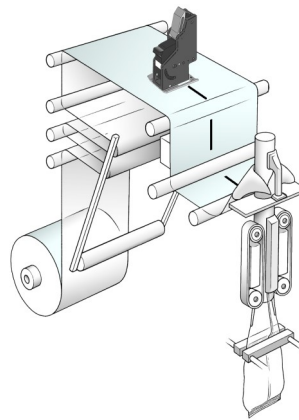
- Small footprint and simple mounting, fitting into most packaging environments.
- Powerful Enterprise level design and control software to make production efficient and effective.
- Ink specifically design for printing on plastics, metals and other hard to print substrates.
- Bulk ink solutions to offer lowest operating costs.

FORM FILL SEALERS

If you need multiple print heads and different locations then the .UNO Plus is the solution for you.

These expanded all-in-one print heads and screen give you a elegant and highly effective method to print up to 4 separate lanes, making them ideal for VFFS Applications.

The .UNO solutions are the lowest costs to buy, install and operate on the market, yet give stunning and reliable performance every print, every day.



REPLACE YOUR CIJ PRINTER

An inc.jet .UNO print solution can help you to replace your troublesome CIJ Printer and here's why...

1. No Mess.
2. No Smell.
3. Zero maintenance.
4. Higher reliability.
5. Lower Costs.
6. Simple operation.
7. Lowered VOC's.
8. Small Footprint.



CASE CODING SIMPLIFIED

The .CORE integrated heads are the essence of what makes inc.jet's industrial printing solutions so successful—rugged design, solid connections to external elements and the finest print heads in the industry, all provided in a commercial off-the-shelf system.



- Fully integrated system including, pens, print controller and bulk ink system for lowest cost operation.
- Rugged design with industrial steel casing for maximum protection.
- Variable and fixed data capability - can take data from external sources.
- Large selection of standard and custom inks in black or color.

NO MESS NO MAINTENANCE

Unlike other print solutions such as CIJ and Thermal transfer (TTO), the ISP is inherently clean, utilizing HP based Thermal Inkjet (TIJ) technology. The ink is sealed within cartridges and is sprayed only when printing.

With no complex filters, ribbons and pumps, there is absolutely no ongoing maintenance, saving you both time and money.

- Open frame design for easy access when changing cartridges.
- HP based Thermal Inkjet technology keeps area mess-free.
- No VOC's as part of the ink delivery system.



DESIGNED TO PERFORM, BUILT TO LAST

inc.jet's Integrated heads are enclosed in an industrialized stainless steel casing for maximum protection. Seamlessly included in this rugged housing is a print controller and a bulk ink system.

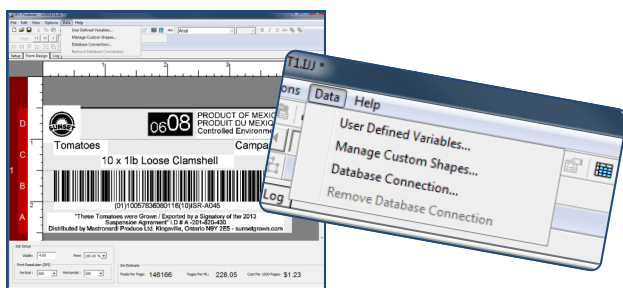
The integrated head has connections for encoders, stack lights, and an internal or external sensor as well as an Ethernet port for connecting to an inc.jet User Interface or even external data sources.



POWERFUL SOFTWARE

With its intuitive interfaces and solid, dependable functionality the included enterprise level software is second to none in the industrial printing systems arena.

A key strength is its ability to rapidly integrate into external industrial printing systems, from databases to other equipment on the packaging line.



SOLUTIONS FOR FORM FILL SEALERS



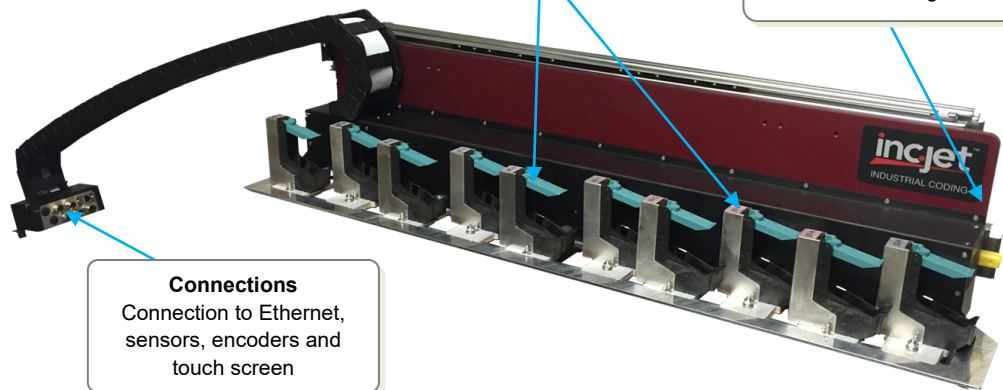
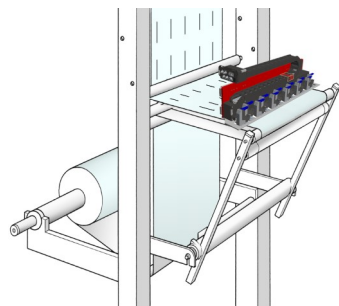
High resolution printers from inc.jet provide a versatile, cost-effective and solid solution to meet the need for variable data printing in a range of Form and Fill Sealers (FFS). Designed to be highly configurable allowing for multiple print lanes to be coded without shuttling print heads or expensive laser systems. The unit can be integrated into almost any VFFS machine, regardless of seal type whether pillow, gusseted, block, or doy.

With a small footprint, a modular design and with no moving parts to consider, inc.jet print solutions gives maximum uptime with almost no maintenance and comes with a true Lifetime Warranty on all parts.

BETTER THROUGHPUT

Although inc.jet printers can print at line speeds of over 160m/min, this is not the major throughput enhancement. Instead it is the ease with which the print system can be running in a matter of seconds with the minimum of user intervention, ensuring maximum productivity at all times.

- Maximum uptime at all time.
- Ready to print in seconds with no sacrificial waste.
- Single button start.



Printheads

Ability to load as many printheads as required for the specific application

Slide mount

Enables entire print head assembly to be moved away from the print area to load cartridges

Connections

Connection to Ethernet, sensors, encoders and touch screen

LOWER OPERATIONAL COSTS

With TIJ based print heads from inc.jet, you use only the ink you print. No overuse of ribbons in TTO print systems and no messy and smelly CIJ printers venting solvents into your plant. And certainly much less expensive than complex Laser based systems.

- Reduced consumable costs.
- No maintenance costs.
- Longer time between changeover.


FLEXIBLE DESIGN TO SUIT YOU

Whether you are running 5 lanes or 16, we have the solution in the iSP design. Define the number of lanes and the width of the film, and you have the perfect solution.

- No moving parts to maximize reliability and uptime
- Very small footprint requirements for easy integration
- Solid and industrial design

KEEPING OPERATIONAL COSTS LOW

The following gives an estimation on how many prints you can get from a single cartridge based on what you are printing. For more information, contact your inc.jet sales representative.

| Font size | Example | Print Resolution | Images per cartridge |
|-----------|---|------------------|----------------------|
| 9 pt | JAN 07 2021 08:15 | 300 x 300 | 580,000 |
| 10 pt | LOT 66G7 EXP 07 JAN 2021 | 300 x 300 | 260,000 |
| 12 pt | USE BY 07 JAN 2017 7D 5766 | 300 x 300 | 185,000 |
| 18 pt | JAN 07 21 H7788857 | 300 x 300 | 104,000 |
| 32 pt | 01/07/21 08:15 A | 300 x 300 | 52,000 |
| N/A |  (01) 012345678901231 (10) HJS649 (17) 28 02 2015 (21) 923Z845Y716W | 300 x 300 | 73,000 |

